



# CHILLED PANORAMIC DISPLAYS

- Versatile attractive chilled display cases
- Eutectic plates keep the temperature cool for up to 5 hours
- Stainless steel or laminated exterior finishes available
- Insulated double wall construction
- CLASSIC** series has flat lift up hinged Plexiglas cover with handle
- BAROQUE** series has a dual service Plexiglas sliding dome cover with handles on each side
- Ideal for displaying of salads, sandwiches, desserts and fruit



CLASSIC display shown on MINERVA cart

## BAROQUE

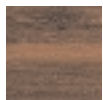


## CLASSIC



MODEL	EXTERIOR DIMENSIONS W x D x H	EXTERIOR FINISH	COVER TYPE	SHIPPING WEIGHT
CLASSIC I	34 1/4" x 18" x 8"	STAINLESS	FLAT	60 lbs
CLASSIC II	35" x 19 3/4" x 8 1/4"	LAMINATED	FLAT	60 lbs
BAROQUE I	34 1/4" x 18" x 12 1/4"	STAINLESS	DOME	65 lbs
BAROQUE II	35" x 19 3/4" x 12 3/4"	LAMINATED	DOME	65 lbs

### AVAILABLE EXTERIOR LAMINATES AND FINISHES



walnut



black



beech



stainless steel



ANSI/NSF-2



Eutectic chilling plates (set of 3) - for effective and continuous holding



765 WESTMINSTER STREET PROVIDENCE, RI 02903  
TEL: (401)273-3300 FAX: (401)273-3328 E-mail:sales@equipex.com  
www.equipex.com

# ELEGANT SERVICE CARTS



SCORPIONE cart shown with BAROQUE display

- Hardwood structure stained walnut
- Walnut laminated wood shelves
- Black metal shelf frame (on *MINERVA* only)
- Sliding dish shelf under top
- 4" swivel casters
- Chrome acrylic caster covers (optional for *MINERVA*)

## MINERVA



## SCORPIONE



MODEL	EXTERIOR DIMENSIONS W x D x H	SHELF DIMENSIONS W x D	NUMBER OF SHELVES	SHIPPING WEIGHT
MINERVA	40"x19"x33 1/2"	38 1/2"x19"	2	70 lbs
SCORPIONE	38 1/4"x22"x32 1/4"	35"x19 1/4"	2	75 lbs

UNITS SHIPPED DISASSEMBLED FOR ECONOMICAL TRANSPORT